

Non-Tilt Overbed Tables

HCPCS: E0274

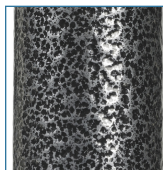


FIGURE A



FIGURE B

- Walnut, wood grain low-pressure laminate top
- Table top can be raised or lowered in infinite positions between 28" - 45"
- "H" base provides security and stability
- Silver Vein (Figure A) for (Model #13067) is easy-to-maintain and less institutional looking
- Tabletop locks securely when height adjustment handle is released
- It can be raised with slightest upward pressure
- For proper assembly, do not remove bottom screw (Figure B)
- 2" swivel casters allow for easy maneuverability

PRODUCTS	Description
13003	Overbed Table,Dlx.Non-Tilt,1/cs
13067	Overbed Table,SilverVein,Dlx.,1/cs

SPECIFICATIONS	Description
Base Dimensions	15.5" (D) x 26.5" (W)
Carton Shipping Weight	24 lbs.
Height Adjustable	28" - 45"
Tabletop Surface Dimensions	15" (D) x 30" (W)
Warranty	Limited Lifetime
Weight	21 lbs.
Weight Capacity	40 lbs

PARTS	Description
13008CP	Caster Plug, 13008,4/bx, BX
13003-SET	HardwarePackFor13003/13067,1ea, EA
13003C	Column Only,13003,1/ea, EA
13085EH	Elevating Hndle Assm.13085,1/ea, EA
13007C	Caster,Overbed table.1/ea, EA
13007CL	Caster for 13007 w/Lock,1/ea, EA
13067HB	Base Over Bed Table,13067,1/ea, EA
13067AM	Adjustable Mast for 13067, 1/ea, EA
13067-T	TableTop w/Bracket 13067,13003,13007,1ea, EA